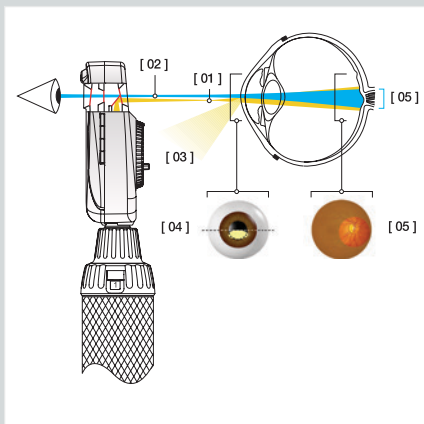




DIRECT OPHTHALMOSCOPES BETA 200 OPHTHALMOSCOPE



“Aspherical Optical System” (AOS) exclusively from HEINE eliminates corneal and iris reflexes to provide large, crisp and glare-free fundus images.

- [01] Flat, elliptical illumination beam produced by HEINE's Aspherical Optical System.
- [02] Observation path.
- [03] Redirected iris and corneal reflexes.
- [04] The elliptical light beam enters through the lower half of the cornea. The illumination beam has been separated from the observation beam (Gullstrand-Principle). All reflexes are diverted away from the observation beam due to the curvature of the reflective cornea. Due to the flat, compressed form of the light beam, a maximum amount of light enters through the pupil.
- [05] Once past the anterior chamber, the light beam opens up dramatically to illuminate a large area of the retina.

HEINEBETA® 200 Ophthalmoscope

Superior aspherical optics with xenon halogen illumination



Exclusive dustproof design protects the precision optical components and ensures maintenance-free operation. The BETA 200 Ophthalmoscopes are the only instruments with an aluminium frame system. Optical components are flush-mounted on a cast aluminum frame, eliminating misalignment and making the instrument shock-resistant. The BETA 200 has virtually unlimited hours of working life. Maintenance-free.

- ✦ **Exclusive Aspherical Optical System (AOS).**
- ✦ HEINE has set a new standard which maintains that only the best is good enough, from the selection of materials to processing, from light intensity to dimmability, and from thermal management to a colour rendering index as high as possible.
- ✦ **Special optical interface to precisely integrate the illumination with the optical system** to ensure bright, homogeneous light during examinations.
- ✦ **The BETA 200 Ophthalmoscope** accommodates higher refractive errors with a design on a continuous wheel avoiding extreme diopter jumps.

+ in 1 D steps :	1	- 10	15	20	40	D
- in 1 D steps :	1	- 10	15	20	25	35D

- ✦ **Patented, unique, stepless dimming** from 3% to 100% with practical one-finger operation
- ✦ **No stray light due to the recessed, multi-coated viewing window** - eliminates distractions.
- ✦ **Precise one-hand control of the instrument.** Ergonomic design offers flexibility while examining.
- ✦ **Suitable for large as well as small or undilated pupils.**
- ✦ **Ergonomic design** fits the orbita comfortably, and blocks out ambient light.
- ✦ **Full functionality of the BETA 200 is guaranteed.**
- ✦ **Battery Handle** for 2 'D' size cells.
- ✦ **2.5V xenon Halogen bulb.**

BETA 200 with 6 apertures



Cobalt blue filter, fixation star with polar coordinates, large spot, small spot, slit, hemispherical spot



With red-free filter

AWARD WINNER!



HEINE has been named Brand of the Century "German Standards" in the field of primary diagnostic instruments.

HEINE Optotechnik GmbH & Co. KG
Kientalstr. 7, 82211 Herrsching, Germany
Tel. +49 (0) 81 52-38 0, Fax +49 (0) 81 52-3 82 02
E-mail : info@heine.com, www.heine.com

